

The RSPCA Leeds, Wakefield and District Branch promotes kindness and prevents cruelty to animals in the local area.

Corporate Sponsorship Package



**Leeds, Wakefield
& District Branch**
Registered Charity No., 232223

RSPCA Leeds, Wakefield & District Branch
Moor Knoll Lane
East Ardsley
WF3 2DX



About us

The RSPCA Leeds, Wakefield & District Branch provides a safe haven in which abused, neglected and abandoned animals can be cared for, socialised and rehabilitated before they are found a new home. Here at the branch, we are dedicated to rehoming, rehabilitating and doing everything we can for animals that have not had the best start in life. We all work extremely hard to make sure that these animals are given the best care and treatment; so that they can go on to their forever homes.

The branch opened its doors to our new centre in summer 2015 and we can now provide accommodation for 15 dogs, 30 cats and 8 rabbits at any one time. It is an exciting time for the branch at the moment and we aim to work with the community in the Leeds, Wakefield & District area to help tackle and prevent cruelty to animals in various different ways.

We are a separately registered branch of the RSPCA and are primarily responsible for raising our own funds locally. We rely heavily on the funds generated by our network of charity shops & tireless fundraising in the community, without which we would be unable to carry on our important animal welfare activities.

Last year we rehabilitated and re-homed 336 animals. This however requires funds. The centre needed £191, 967 to care for the animals that were brought into our centre. This equates to £571 spent on each animal that we rehabilitated and rehomed.



RSPCA Leeds, Wakefield & District Branch
Moor Knoll Lane
East Ardsley
WF3 2DX



Leeds, Wakefield
& District Branch
Registered Charity No. 222223



Why Sponsor the RSPCA Leeds, Wakefield & District Branch?

We are very grateful for the support our branch receives from the local community and we continuously strive to increase this by working with various different organisations in the local area. With your support through sponsorship you could be part of this. We have a large number of people coming to visit our animal centre on a daily basis so your company details would attract a large amount of attention and interest. We also have a large level of support on our social media pages; Facebook, Twitter and Instagram.

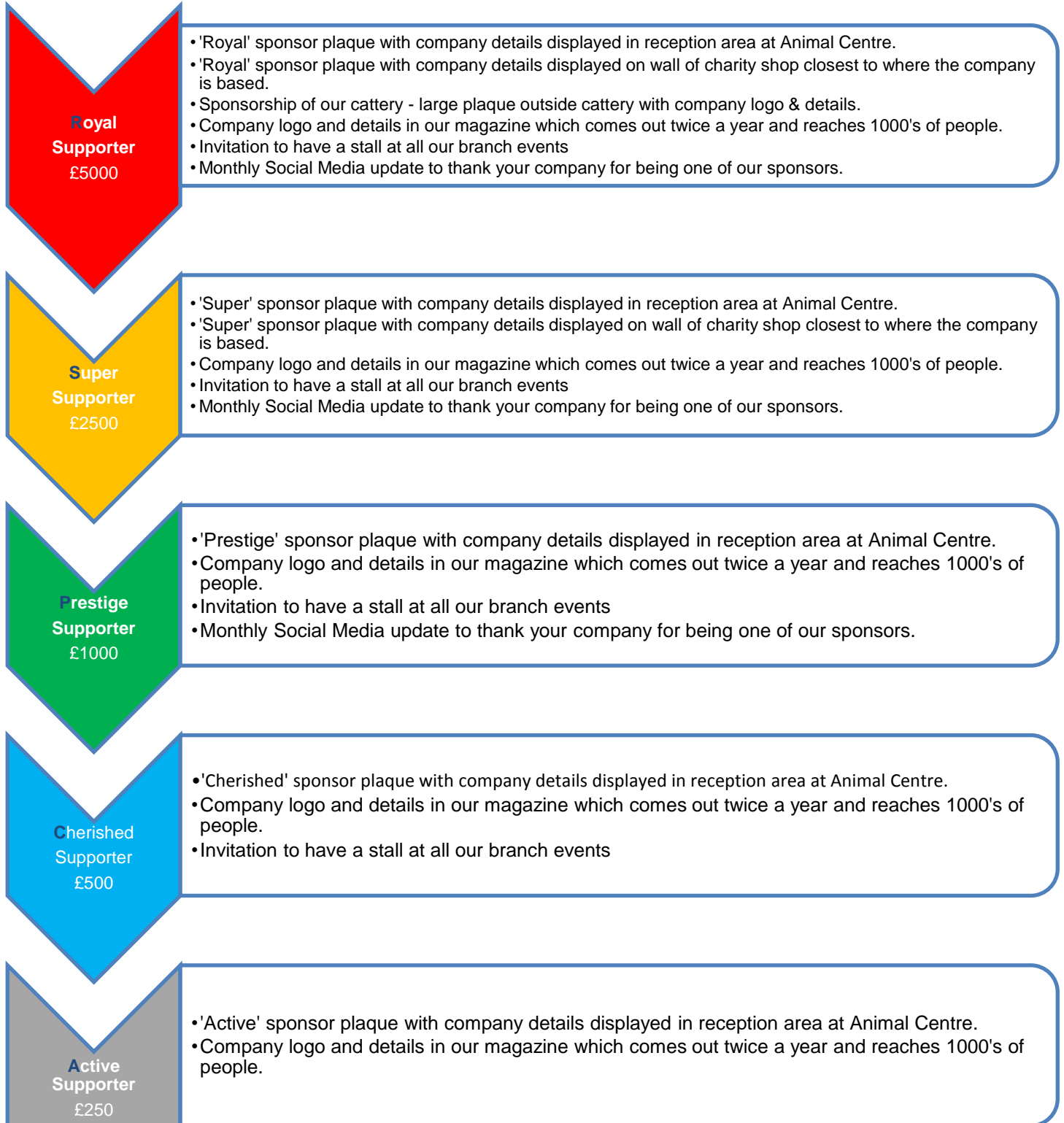
Sponsorship: what are the other benefits?

There are various different benefits to becoming a corporate sponsor for our branch. Not only will you receive numerous benefits based on the level of sponsorship you choose, you will also be assured that your brand awareness will increase, you will develop more PR opportunities and your business will prosper even more than it already does in the local area. You can be confident that the RSPCA Leeds, Wakefield & District Branch will work together with your organisation and establish a long lasting partnership. Not only will you receive the many benefits of sponsoring our branch, you will have the satisfaction of knowing that you are helping the animals in our care be rehabilitated and rehomed after a difficult beginning to their life. Additionally, we currently have 7 charity shops in our Leeds, Wakefield & District area giving a brilliant opportunity for us to promote your business as much as possible.

The following page lists the various different corporate sponsorship levels that our branch has to offer.



Sponsorship Package Levels



RSPCA Leeds, Wakefield & District Branch
 Moor Knoll Lane
 East Ardsley
 WF3 2DX



Leeds, Wakefield
 & District Branch
 Registered Charity No. 222223



In Kind Donations

Would you prefer to donate us a product that will benefit our branch instead of money? No problem! Some companies feel this is a good way to advertise the products they have to offer. Speak to us further regarding the level of sponsorship if this is something you would be interested in.



Sponsorship instalments

Would you prefer to pay for your sponsorship in instalments rather than in one full payment? That is fine! You can spread the costs between 2-12 regular instalments within one calendar year.

Thank you for taking your time to read this package. If you have any further questions regarding the sponsorship levels, please speak to Sally Balmforth on:

Mobile: 07714733309

Email: sally.balmforth@rspcaleedsandwakefield.org.uk

RSPCA Leeds, Wakefield & District Branch
Moor Knoll Lane
East Ardsley
WF3 2DX



Leeds, Wakefield
& District Branch
Registered Charity No. 22222



2016 Corporate Sponsorship

Sponsor Details

Name:

Position (if applicable):

Organisation (if applicable):

Postal address:

Phone:

Email:

Tick	Sponsorship Type	
	Royal	£5000
	Super	£2500
	Prestige	£1000
	Cherished	£500
	Active	£250
Total Sponsorship Amount		

Payment Details

Please make your payments to RSPCA Leeds, Wakefield & District Branch via either:

Cheque – made payable to RSPCA Leeds, Wakefield & District Branch

Bank Transfer – please contact us for our details.

Pay in instalments of £_____ every ____ months.

Please complete and return this form to RSPCA Leeds, Wakefield & District Branch, Moor Knoll Lane, East Ardsley, Wakefield, WF3 2DX. 07714733309, sally.balmforth@rspcalleedsandwakefield.org.uk.

Thank you for supporting the RSPCA Leeds, Wakefield & District Branch. We will be in touch soon to discuss your sponsorship further and any requirements you might have.

RSPCA Leeds, Wakefield & District Branch
 Moor Knoll Lane
 East Ardsley
 WF3 2DX



Leeds, Wakefield
 & District Branch
 Registered Charity No. 22222